

# RAPPA



## INSTRUCTIONS

RaceWeigh

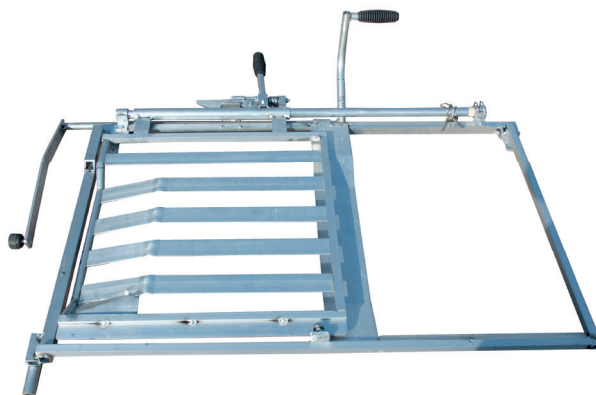


## COMPONENTS

Before starting, unpack the pallet. Check all the components listed below are present and undamaged. We recommend reading the instructions in full before starting, to familiarise yourself with the build process.

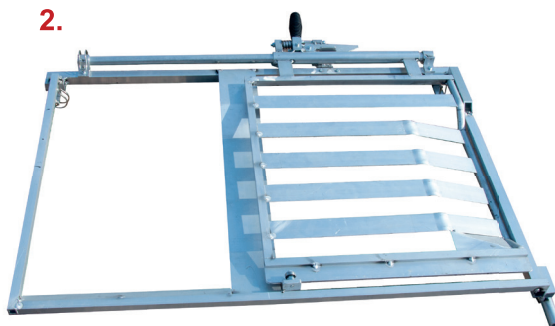
- |                |                                |                |
|----------------|--------------------------------|----------------|
| 1. Right Gate  | 5. Anti Jump Bar               | 9. Pipe Pin    |
| 2. Left Gate   | 6. Exit Gate Anti Lift Bracket | 8 x M6 X 45    |
| 3. Exit Gate   | 7. Weigh Plaform**             | 8 x M8 X 60    |
| 4. Entry Gate* | 8. Retaining Knob              | 10. Lynch Pins |
|                |                                | 1 x M6 x 45    |

1.



3.

2.



\* Including Weigh Head bracket

\*\* Including load bar

4.



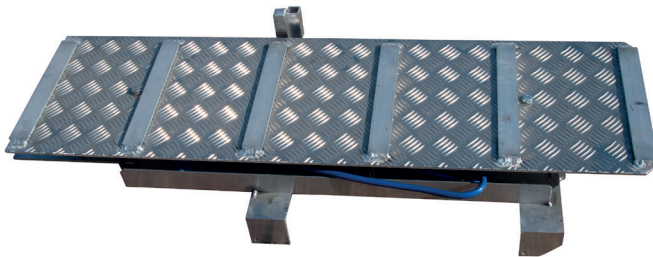
5.



6.



7.



8.



9.



10.



## ASSEMBLY

1. Prepare your yard for fitting the RaceWeigh. Remove the Cross Frame, Wheel Arms, Drawbar, Winch and front Drop-In Gate.



2. Remove both let-out gates by releasing the springs and lifting off the hinge. Keep note of the left hand and right hand springs and hinge for re-fitting.



3. Place the Weigh Platform (7) into the bottom of the yard, with the blue electric cable in the back right corner.



4. Secure with 4 Pipe Pins (9).  
M8 X 60

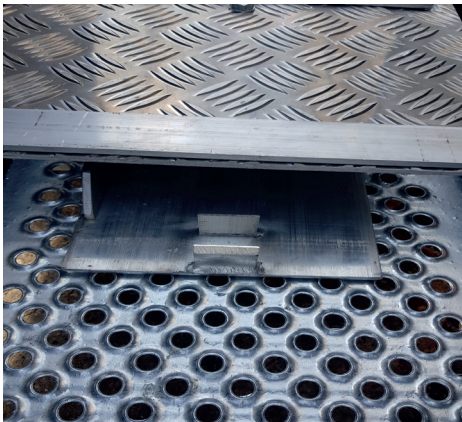




5. Fit the Entry Gate (4) inside the race behind the Weigh Platform. The fixings on the top of the frame should face inwards.



6. There is a rest located behind the platform to place the gate into.



7. Secure Entry Gate with 2 Pipe Pins (9) either side of the top rails of the race. M8 X 60



8. Fit the Right Gate (1) by placing inside the yard base then drop onto the hinge (A) and hooking onto the top rail (B). Secure with 2 Pipe Pins (9).M6 X 45.



A.



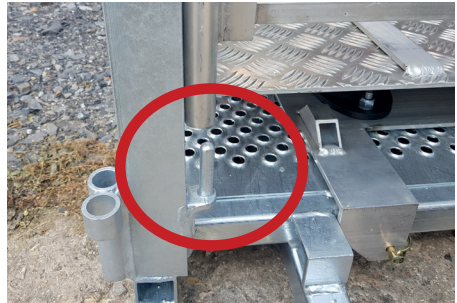
B.



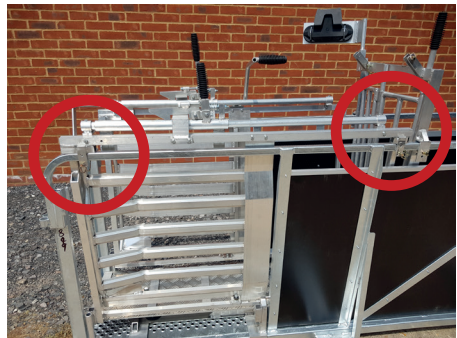
9. Fit the Left Gate (2) by placing inside the yard base then drop onto the hinge (A) and hooking onto the top rail (B). Secure with 2 Pipe Pins (9).M6 X 45



A.



B.

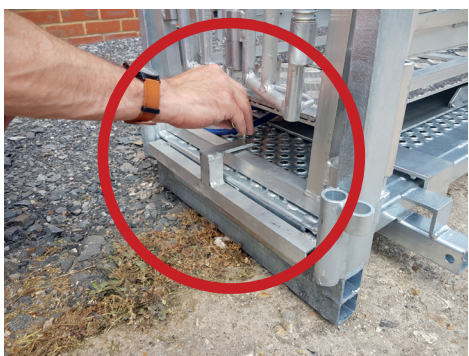




10. Fit the Exit Gate (3) in front of the Weigh Platform. Sliding it into the channel on the front of the yard (Drop-in Gate).



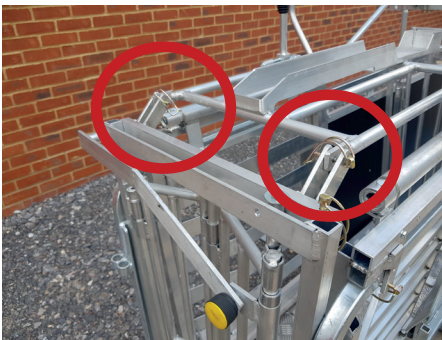
11. Use the Exit Gate Anti Lift Bracket (6) to secure the Exit Gate. Use 1 Lynch Pin (9) to fix. M6 X 45



12. Secure the Left Gate handle to the Exit Gate using the Retaining Knob (8).



13. Fit the Anti-Jump Bar (5) using 4 Pipe Pins. Secure the back two first. M6 X 45.



14. Attach the can holder.



15. Fit the Weigh Head.



16. Attach the Weigh Platform to the Weigh Head.





## ADVICE

### Before starting:

- ALWAYS check that there is not a build-up of mud under the platform.
- ALWAYS check that the drafting gates are running freely and not touching the weigh platform.

### In Use:

- Encourage lambs to enter the RaceWeigh slowly.
- Flow, not speed, is the secret to swift and accurate weighing.
- Upon the lamb entering the RaceWeigh allow the Weigh Head to register a stable weight before placing a hand on the animal. A stable weight is indicated when the Weigh Head shows a solid red light.
- Once a weight is shown on screen the animal may be hand graded. Touching the lamb too soon will skew the weight given.
- Once hand graded allow the Weigh Head re-calibrate and show a solid red light before pressing the record button.
- Ensure the lamb has not backed onto the rear gate as this may cause an inaccurate weight.
- Draft the lamb out of the RaceWeigh before opening the rear gate for the next lamb.

### Storage:



- KEEP the caps screwed on your load bar cables and Weigh Head when not in use.
- KEEP all caps and cables dry when not in use.
- If you are not regularly weighing, we advise that you take the RaceWeigh out and store it in a dry place.

## TROUBLESHOOTING


### Problem: Slow finding a stable weight?


- a. Check your settings.
- b. Ensure your weigh-head is connected to the load bar.


c. Press .


d. Press  to navigate to "Set ups...." Press .


e. Press  twelve times to navigate to "Damp System".

Press  once. The screen will now display:  
"Super Damp 111 Sheep".


f. Press  once to navigate to "Tolerance".

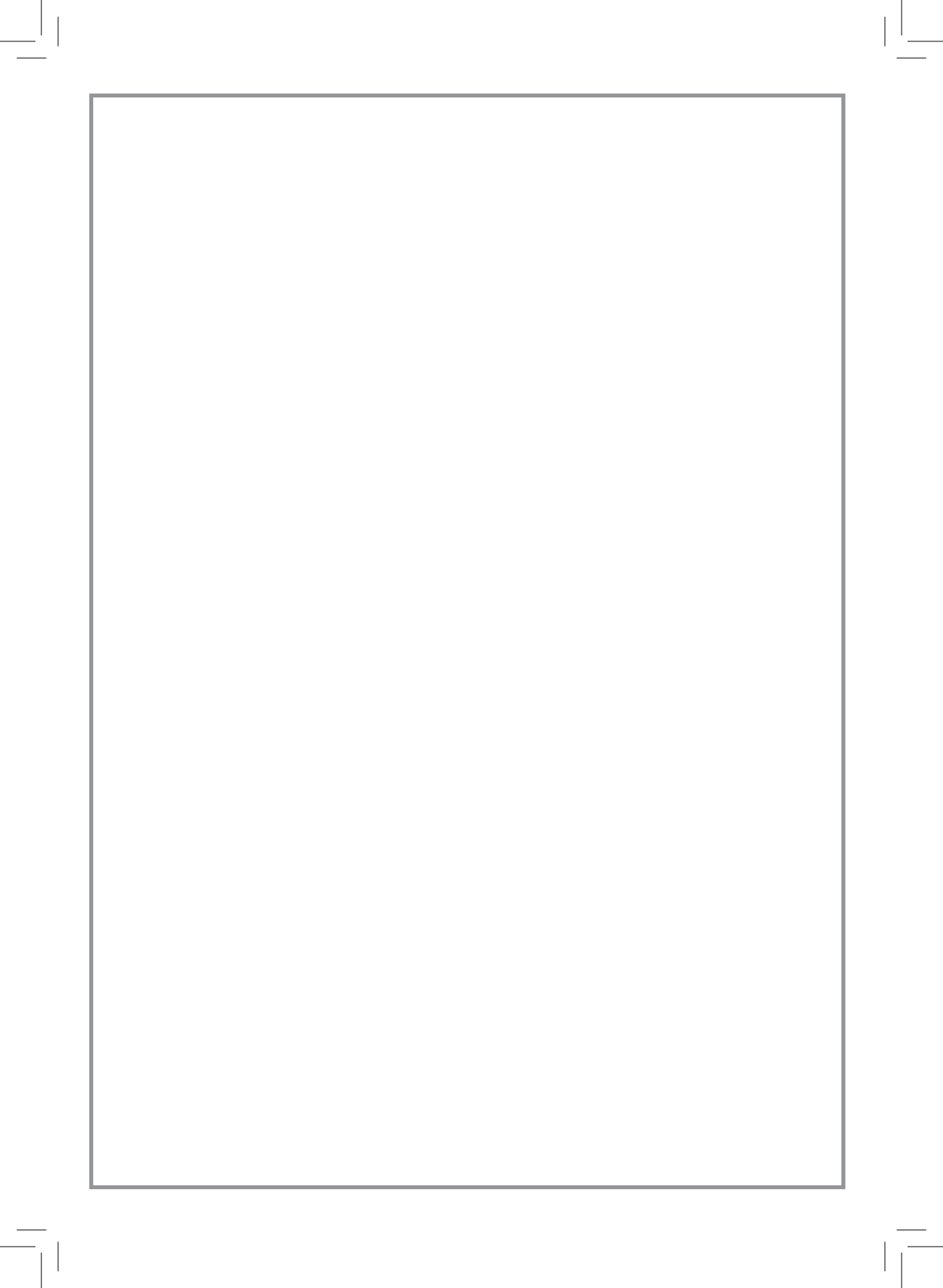
Press  once to set the tolerance to 2d.

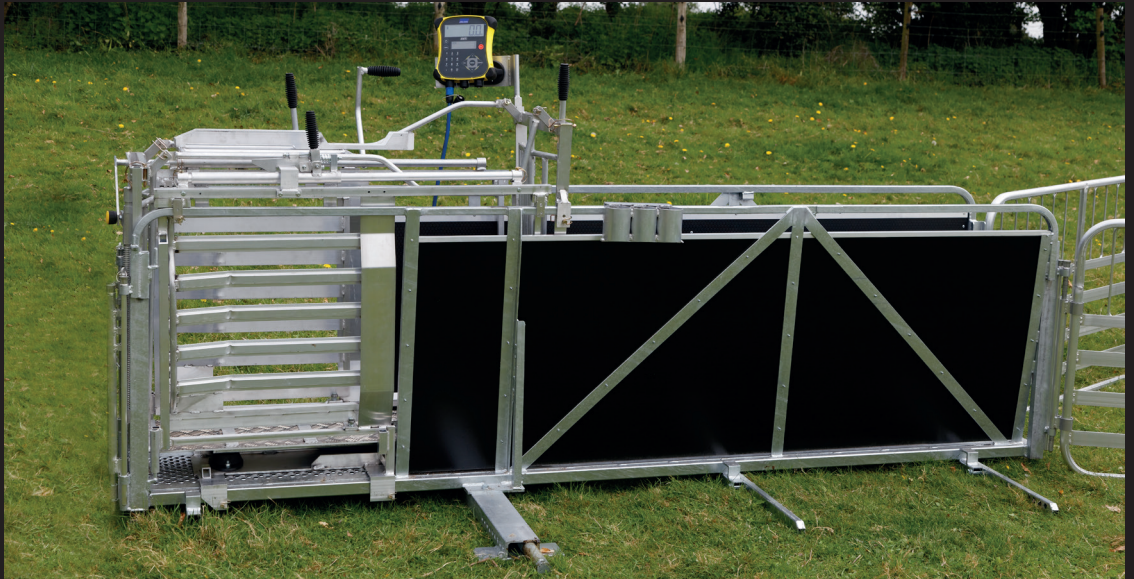
g. Press  eight times to navigate to "Resolution".

Press  once to set the resolution to 0.5.

Note: Once switched off the resolution will revert back to 0.2.

h. Press  twice to continue weighing.





Rappa Fencing Ltd  
Steepleton Hill | Stockbridge | Hampshire | SO20 6JE  
01264 810665 | [sales@rappa.co.uk](mailto:sales@rappa.co.uk) | [www.rappa.co.uk](http://www.rappa.co.uk)