

RAPPA



ASSEMBLY INSTRUCTIONS

RaceGrip





COMPONENTS

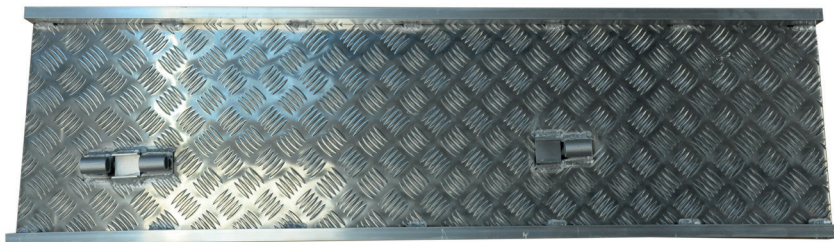
Before starting, unpack the pallet. Check all the components listed below are present and undamaged. We recommend reading the instructions in full before starting, to familiarise yourself with the build process.

1. Yard Attachment Bracket.
2. Exit Ramp
3. Pipe Pin
4. Large Grip-Panel
5. Small Grip-Panel
6. Entry Panel - Right
7. Anti-Backing Gate
8. Entry Ramp
9. Entry Panel - Left
10. Stop Gate
11. Race Grip Handle
12. Panel Connector



1.

2.

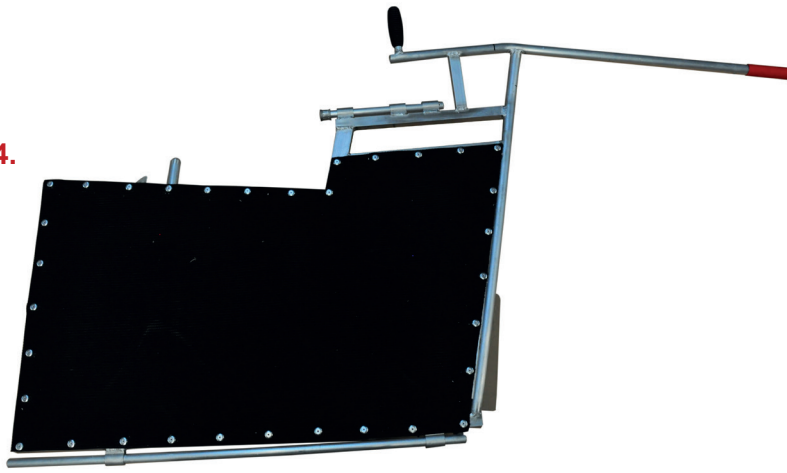


3.





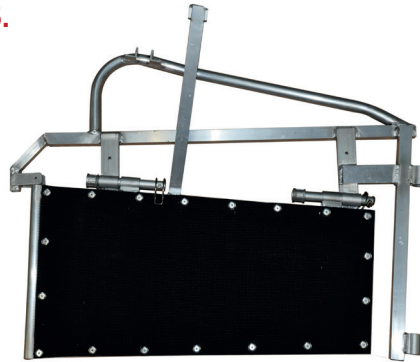
4.



7



5.



6.





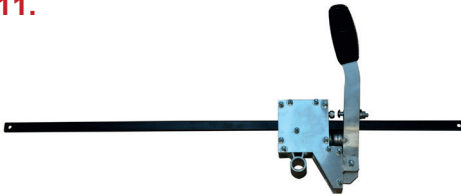
8.



9.



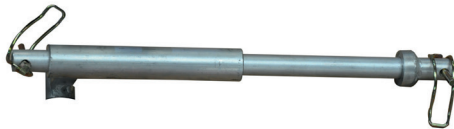
11.



10.



12.





ASSEMBLY

1. Prepare your yard for fitting the RaceGrip. Remove the Cross Frame, Wheel Arms, Drawbar, Winch and Hurdles.
2. Fit the Yard Attachment Bracket (1) to the back of the yard base using two long pins.

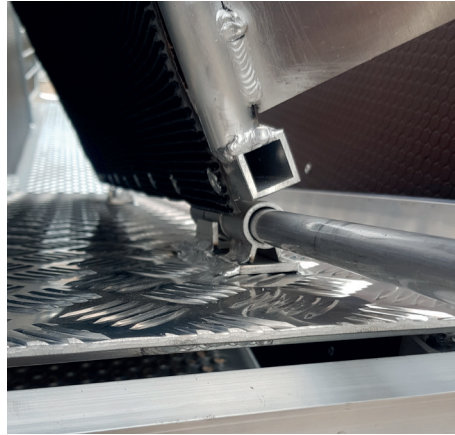


3. Place the Exit Ramp (2) inside the yard race. Secure by locating the connectors onto the Yard Attachment Bracket and locking with a Pipe Pin (3).





4. Remove the Long Pin from the Exit Ramp. Locate the Large Grip-Panel (4) and secure re-using the Long Pin.



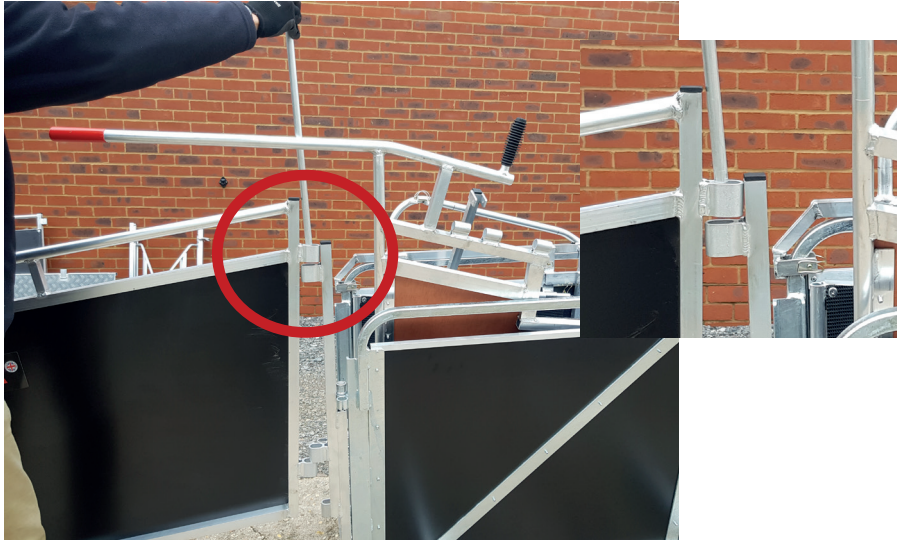
5. Place the Small Grip-Panel (5) onto the yard frame opposite the Large Grip-Panel. Secure using three Pipe Pins(3).





6. Place the longer, Entry Panel - Right (6) onto the Yard Attachment Bracket and secure with a long pin.

Note: The lug position for panel to the Yard Attachment Bracket.



7. Place the Anti-Backing Gate (7) at the end of the entry panel. Secure to the panel using a long pin.





8. Fit the Entry Ramp (8).Secure by locating the pins to the Yard Attachment Bracket and locking with a Pipe Pin (3).

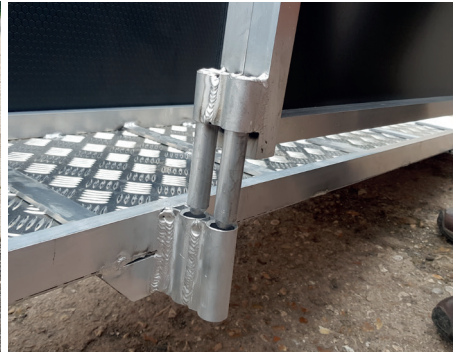


Note: The Entry Ramp must sit on top of the Anti Backing Gate Frame.





9. Position the short, Entry Panel -Left (9) opposite the long Entry Panel - Right. Locate the two round bars into the tubes on the platform. Secure to the Anti-Backing Gate with a long pin.



10. Fit the Stop Gate (10) to the Entry Panel - Left using a long pin. Test the gate opens inwards.





11. Locate the RaceGrip Handle (11) and the Panel Connector (12) onto the Large Grip - Panel and secure using a pin.



12. Pull the Panel Connector towards the Small Grip -Panel and secure using a Pipe Pin (3). Next Secure the Black Slider located on the RaceGrip Handle to the Small Grip Panel using Pipe Pin (3).



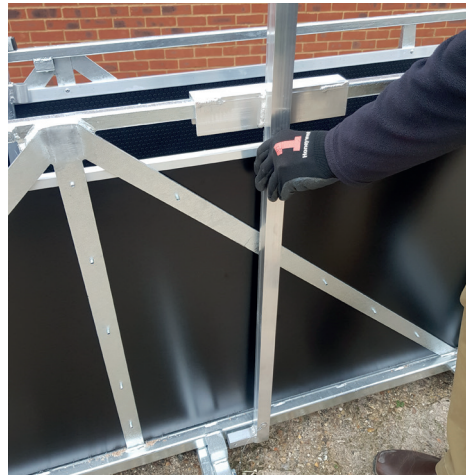
13. Your RaceGrip is now complete and ready to use.





EXTRAS

- Shearing Pole fits into the Entry Panel - Right
- Drenching Pole is fitted onto the yard race and secure with a lynch pin.





Rappa Fencing Ltd

Steepleton Hill | Stockbridge | Hampshire | SO20 6JE

01264 810665 | sales@rappa.co.uk | www.rappa.co.uk

